

# Crown Dance Ministry

## SAPPHIRE 5A

### Mondays:

5:30-6:15 Hip Hop 4/5/T (Sapphire, Ruby, Onyx) with Ms. Grace

6:15-6:45 Worship 4/5/T (Sapphire, Ruby, Onyx) with Ms. Camille

6:45-8:00 Sapphire A and B Ballet with Ms. Maddy

8:00-8:30 Sapphire Pointe or Sapphire/Ruby Pre-Pointe

### Tuesdays:

4:45-6:15 Sapphire 5A Ballet with Ms. Camille

6:15-7:00 Contemporary 4/5 (Sapphire and Ruby) with Ms. Camille

7:00-8:30 OPTIONAL: Sapphire 5B Ballet with Ms. Camille

### Thursdays:

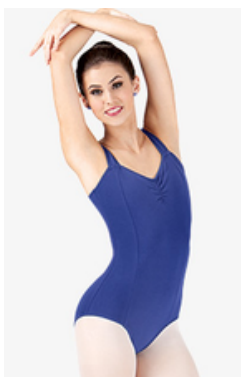
4:45-5:15 Tap 4/5/T (Sapphire, Ruby, Onyx) with Ms. Maddy or Camille

5:15-6:00 Jazz 4/5 (Sapphire and Ruby) with Ms. Maddy

6:00-7:30 Sapphire A and B Ballet with Ms. Camille

7:30-8:30 Intermediate Ensemble Rehearsal

### UNIFORM:



Theatricals: Adult Cotton Pinch Front Tank Dance Leotard

**Royal Blue**

Optional: Theatricals: Capri Leggings Black

**discountdance.com**

**Hair in a neat ballet bun**

**White Skirt, Leggings, Pink Convertible Tights, Pink Split Sole  
Ballet Shoes, Black Tap Shoes (Tap), Black Jazz Shoes (Jazz)**